

Entry Pack

CLUB MARCONI SOUTH PACIFIC OPEN

15* - 17 September 2023

*Friday night (15th) games for local players
(within 40km radius) may be required

Entry fee: \$125

Women/Juniors: \$60

Entries close: 9pm, 7th September
(Entries may be capped at 71)

Club Marconi

121-133 Prairie Vale Road,
Bossley Park 2176



**Sanctioned National
Ranking Tournament**



CLUB MARCONI

Welcome

Dear players,

On behalf of the Snooker & Billiards NSW Board of Directors, we are delighted to invite you to take part in the Club Marconi South Pacific Open.

This is the 16th year of the hosting of this official ABSC ranking event, run by Snooker and Billiards NSW in conjunction with the ABSC and Club Marconi..

Together with the Australian Billiards & Snooker Council & Club Marconi, we look forward to welcoming you to this fantastic venue at Club Marconi, & the city of Sydney.

Yours in sport,



Alex Render

Chairman



David Waller

Tournament Director



Eligibility & Entry

Eligibility

- This is an open event.
- SBNSW welcomes players and officials of all genders.
- Players must be financial members of their Affiliate State or National Federation and in good standing.

Entry

- All entries must be submitted online at www.snookernsw.com
- Entries close*: 9pm, 7th September (*may be capped at 71 entries)
- Entry Fee: \$125 (Women/Juniors \$60)

[ENTER ONLINE](#)
[NOW](#)





TOURNAMENT TERMS & CONDITIONS

- The Tournament will be played subject to the Rules of Snooker as prescribed by the WPBSA.
- ABSC Playing Conditions and all matters pertaining to Player's Code of Conduct and Ethics will also be adhered to. Any breach of such rules or non-adherence to standard etiquette may result in disciplinary action being taken against the offenders.
- Players will referee own games, Referees will be supplied from the last 16 onwards
- Players or referees are not permitted to smoke or consume alcohol whilst involved in a game
- Dress Rules: Dark Tailored Trousers, Dark Colored Plain Dress Shoes, Long Sleeve Predominately Plain Colored Shirt Buttoned at the wrist, Waistcoat & Bow Tie.
 - **Fri & Sat:** Snooker NSW Polo Shirts or Current Official State Polo or plain Black or White polo Or plain colored long sleeve shirt, with Dark Tailored Trousers, Dark Colored Plain Dress Shoes
- Seedings will apply based on the National Snooker Rankings as per the ABSC website.
- Format: straight knock-out over best of five (5) frames; Final best of seven (7) frames.
- Entries will be required online www.snookernsw.com before any player is permitted to compete.
- Minimum prize money of \$8,000 due to National Ranking status.
- Players may be subjected to Drug testing in accordance with the ABSC Drugs in Sport Policy.
- Players must be registered and in good standing with an affiliate of the ABSC

Tournament Information



PRIZE MONEY

*SUBJECT TO ENTRIES

WINNER	\$3000
RUNNER UP	\$1500
SEMI FINALISTS	\$750
QUARTER FINALISTS	\$375
LAST 16	\$200
HIGH BREAK	\$200



The Venue



CLUB MARCONI

**121-133 Prairie Vale Road
Bossley Park, NSW 2176**

Located on 31 acres of parkland and playing fields at Bossley Park in Sydney's West, Club Marconi boasts multiple dining options, function rooms and sporting clubs and prides itself on embracing the multicultural legacy that is Western Sydney

Marconi Snooker & Billiards is well known as one of the best clubs and rooms for tournaments and recreational games. The championships will be played on 7 tables.



DINING OPTIONS

The Piazza - open 7 days, until late

Cucina Galileo: Fri & Sun 12-3pm; Fri & Sat 6-9:30pm

Star Buffet: Lunch - Mon-Sun 11:30am-2pm

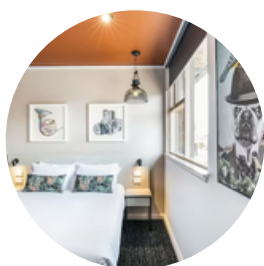
Dinner - Fri-Sat: 5:30-9:30pm; Sun 5:30-8:30pm

ACCOMMODATION

Club Marconi is located approximately 46km from Sydney CBD. There are a wide variety of hotels & serviced apartments close to the venue. Players are free to book their own accommodation, however SBNSW has negotiated a discount offer with Nightcap Hotels.

CALL THESE HOTELS DIRECTLY AND QUOTE: SNOOKER NSW TO RECEIVE A 10% DISCOUNT

****We recommend that you book as early as possible to obtain the best rates - these hotels do tend to book out quickly.**



Nightcap at Fairfield

(The Brown Jug Inn)

3 Star

Approx 10-15 mins drive to venue

47 Stanbrook St, Fairfield Heights 2165

Phone: (02) 9728 1435

Email: fairfield@nightcaphotels.com.au

Nightcap at Fairfield provides 16 recently renovated rooms, each featuring private ensuites. Guests can take advantage of the convenient on-site amenities, including the Bistro and Main Bar. Complimentary WiFi and on-site parking are offered to all accommodation guests.



Nightcap at Chester Hill Hotel

3 Star

Approx 20-25 mins drive to venue

196 Waldron Road, Chester Hill 2162

Phone: (02) 9644 4171

Email: chesterhillhotel@nightcaphotels.com.au

Nightcap at Chester Hill Hotel provides conveniently located accommodation just a short stroll from Chester Hill train station and the local shopping complex. Also situated near the Hume Highway and Parramatta City Centre. Offering 17 recently renovated rooms, Bistro (open Tues-Sun) plus street parking or public parking at the rear of the venue. .



Nightcap at Pritchards Hotel

3 Star

Approx 10-15 mins drive to venue

360 Elizabeth Drive, Mount Pritchard, 2170

Phone: (02) 9607 0311

Email: pritchardshotel@nightcaphotels.com.au

Nightcap at Pritchard's Hotel offers 16 newly renovated rooms, each with a private ensuite, smart TV and king koil beds. Guests have access to all of the hotel facilities, including Vaz's Kitchen bistro and the sports bar with 26 beers on tap. All guests have access to free WIFI, as well as complimentary parking onsite.



Transport

VENUE TRANSPORT

SHUTTLE

No shuttle bus is available to the venue. The club does operate a courtesy bus in the evenings - available to members (or guests travelling with a member to the same location). More Info [HERE](#)
Bus operates within a radius and may not include all streets within a suburb. Contact Club Reception for map locations. The courtesy bus has limited seats, pre-booking recommended.

TRAIN

The closest train stations to Club Marconi are Fairfield; Canley Vale & Cabramatta. All are approx 15 mins drive/ 30mins by bus from the venue.

AIPORT TRANSPORT

TRAIN

Take the train from Sydney Domestic terminal to Glenfield station. Transfer here for trains to Fairfield & Canley Vale. Bus to the venue is available from both. The journey takes around 1.5+ hours and costs \$25-\$40. Public transport requires an Opal Card, which can be purchased at the Airport stations.

TAXI & UBER

Taxi fares from the airport to the hotel precinct and Club Marconi will take 30-45 minutes, depending on traffic, and will be fairly costly. Uber and other services are readily available.


PRIVATE SHUTTLE

Private shuttles from the airport to the venue/ hotel may be an economical option for multiple players sharing costs. Book online in advance. Examples: airportstaxitransfers.com; www.jayride.com

Contact Us

 dave.waller@bsansw.com

 www.snookernsw.com

 0401 768 284 (text only please)

SNOOKER+
BILLIARDS **NSW**



Supported by the

